



# GAT MONTHLY MEMBERSHIP PROGRESS REPORT

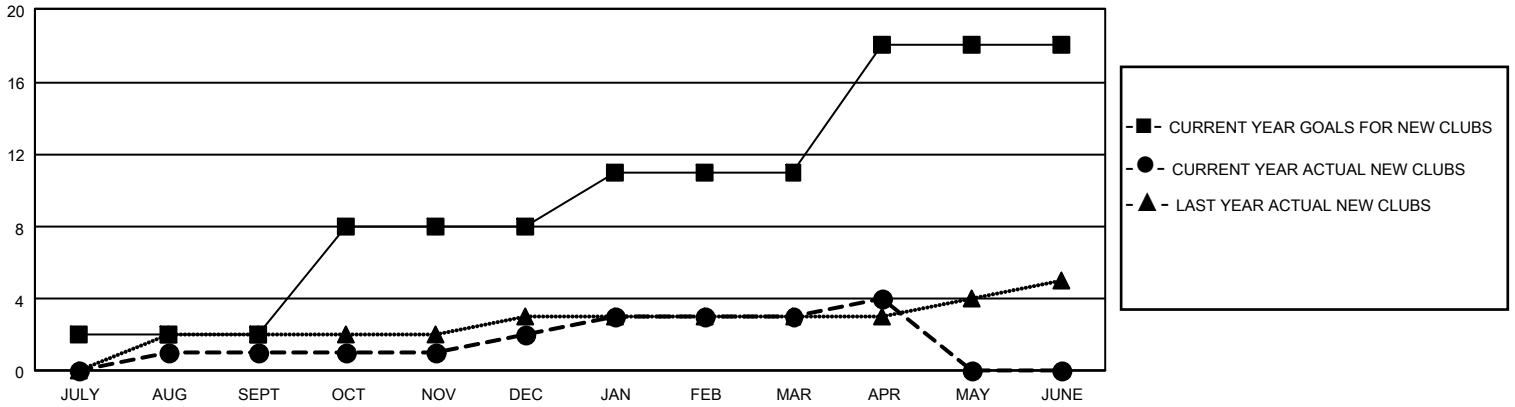
Results as of: 4/30/2022

## GMT Constitutional Area 1, Group N

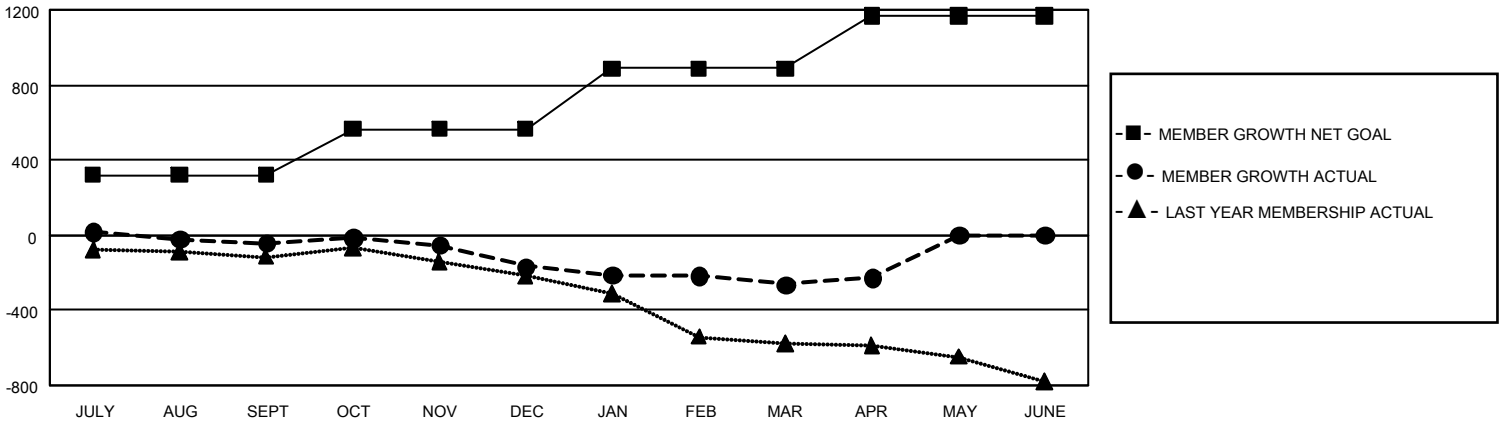
REPORT DOES NOT INCLUDE CLUBS IN UNDISTRICTED AREAS.

Clubs				Members			
RESULTS FOR 2021-2022				RESULTS FOR 2021-2022			
QUARTER	NEW CLUB GOAL	NEW CLUBS	DROPPED CLUBS	QUARTER	MEMBER GROWTH NET GOAL	MEMBER GROWTH ACTUAL	DROPPED MEMBERS ACTUAL (including transfers)
JULY/AUG/SEPT	6	1	7	JULY/AUG/SEPT	319	441	455
OCT/NOV/DEC	18	1	4	OCT/NOV/DEC	247	341	441
JAN/FEB/MAR	9	1	2	JAN/FEB/MAR	320	350	404
APR/MAY/JUNE	21	1	1	APR/MAY/JUNE	282	182	141

GOALS AND ACTUAL NEW CLUBS CUMULATIVE



GOALS AND ACTUAL MEMBERS CUMULATIVE



DROPPED CLUBS: 14	284 CLUBS OF 560 ADDED 1 OR MORE NEW MEMBERS	<u>GENDER DISTRIBUTION</u>	
<u>DROPPED MEMBERS</u>		MALE	7,962 (64.88%)
DECEASED	206	FEMALE	4,309 (35.11%)
CLUB CANCELLED	130	NON BINARY	0 (0.00%)
OTHER	1,105	PREFER NOT TO ANSWER	1 (0.01%)
TOTAL	1,441	TOTAL FAMILY UNIT MEMBERS	2,374
	<a href="#">CLICK HERE FOR CUMULATIVE MEMBERSHIP DATA</a>	FAMILY MEMBERS PAYING HALF DUES	1,217